



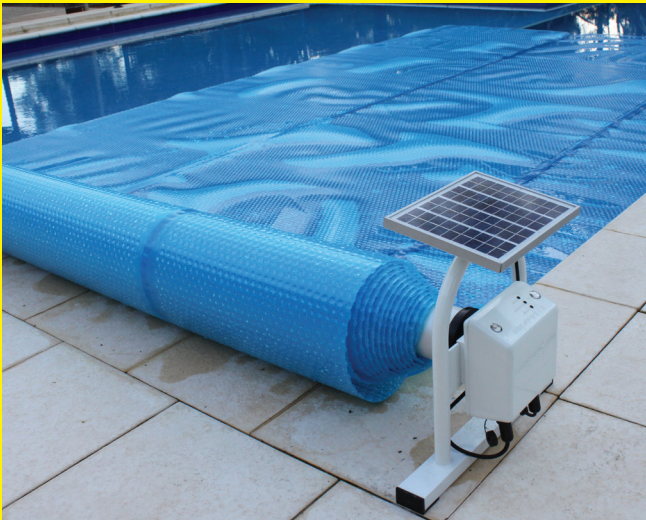
Daisy Quality

We stand by our product.

daisy
pool covers & rollers

Daisy Power

Installation Instructions



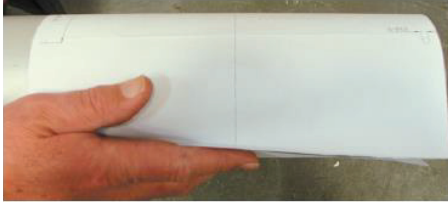
AUSTRALIA'S FAVOURITE.

1300 55 18 11 • daisypoolcovers.com.au

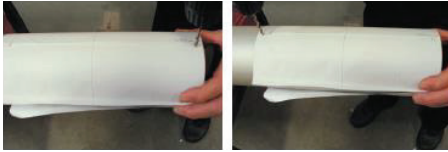
Quality | Technology | Service



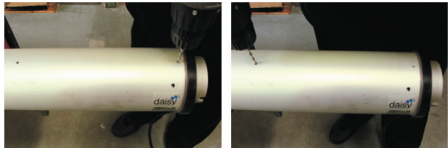
INSTALLATION



1. Decide what end you want the Daisy Power control housing and tube motor. To mount the tube motor in the tube: On the roller end you want the control housing and tube motor, wrap the paper template around roller tube. Note the arrows indicating the end of the tube and the arrows that match together when the template is around the tube. This will ensure the template is square for correct tube motor installation.

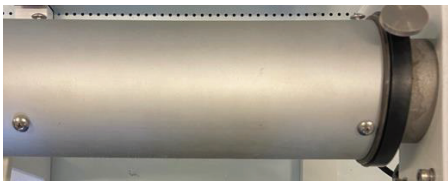


2. **Without** the drive motor inside the tube, mark, and drill 6 x 4.0mm holes through the template with the 4.0mm drill bit (there are 3 holes to be drilled around the tube 8mm in from the end of the tube and a further 3 holes to be drilled around the tube approximately 285mm from end of tube).



3. Insert the drive motor into the tube, making sure the drive motor is pushed all the way in so the disengage system works correctly. If there is a feather plug in the way, remove it, cut the tip of the feather plug off (so it does not hit the tube motor), then replace after motor install, then using the 4.5mm drill again, drill through the 6 holes in the tube, through the drive motor flange.

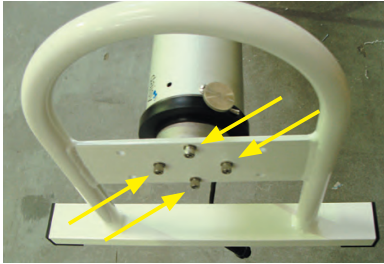
Note: drive motor may have holes already in flange, ensure these holes are not near the mounting holes



4. Insert and tighten the 6 x mounting screws. Important: make sure screws around end of tube do not interfere with tube motor (don't touch tube motor) – check by disengaging drive to freewheel (pulling pin out – see To Disengage Drive in operation section)

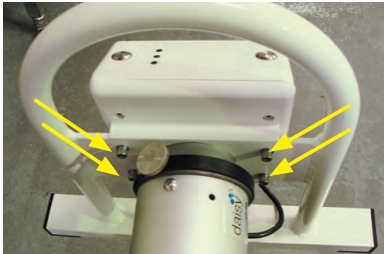


5. Ensure drive motor wire is running through the recess in the housing on the drive motor end, be careful not to pinch wire when mounting.



6. Install the tube motor onto the end frame, secure firmly 4x mounting bolts.

Important: make sure recess is facing DOWN when mounting to frame to avoid water filling up inside



7. Install the control housing, secure firmly the 4x mounting bolts.

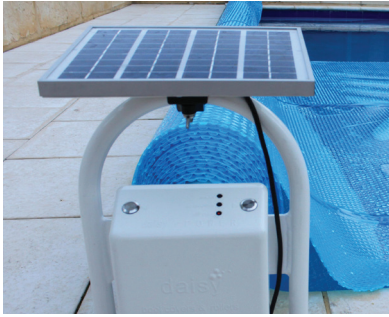


8. Plug in the drive motor wire to the connector socket on the underside of the control housing.

Note: each connector socket has labels for the correct appliance



9. If you have a solar panel, clamp the panel to the drive motor end frame and plug into 'Solar' connector socket on the underside of the control housing



- Adjust the solar panel so it is facing the sun at midday (or at the meantime your solar panel receives full sun). This will ensure the optimum solar panel position for your location. If your solar panel is not in direct sunlight for the majority of the day you will need to recharge the battery using the AC charger. The regularity of recharging using AC charger will be determined by the amount of sun the PV panel receives and your roller usage.

Note: If you do not have enough sunlight on the solar panel to maintain battery voltage, consider the #1262 PV Post Extension kit that comes with a 5m extension cord and post to insert into the ground that solar panel clamps to.

- Plug in AC Charger to fully charge battery before first operation.

OPERATION

General

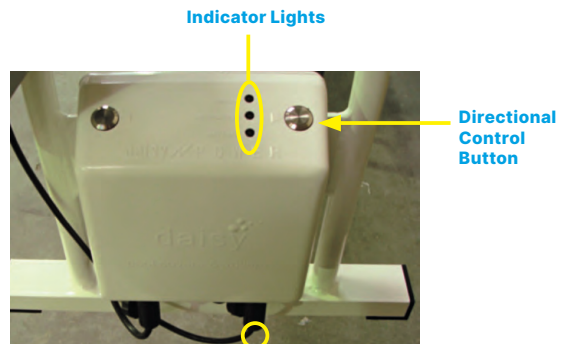
Forward and reverse buttons control the drive motor direction. Remote control operation is the same operation as the buttons on the control housing. Control button and remote button will only operate the motor while the button is being pressed. Ensure the AC charger pack is not exposed to water or weather. Plug in AC charger into the AC Charger connection to recharge battery.

To free wheel the roller tube, disengage the motor drive by lifting the locking pin – lift up to free wheel (rocking the tube back or forward may be required to take the weight off the pin to disengage)

For best operation, the pool cover should be cut to water line or less

Ensure the cover has no folds or any obstruction to catch on when rolling up

Tip for larger pools: to make it easier to put the cover back onto the pool, disengage the drive motor then push the deploy button on the remote as you are pulling the cover back onto the pool from one side



Daisy Power Auto-Roll Function

You can set the Auto-Roll timer function in either direction. As the Auto-Roll is a timer, the roller position and cord length (how much cord is unrolled off the roller) will affect where the Auto Roll will stop.

The Auto-Roll is programmed on the '**Tube motor' buttons** (forward and reverse on the control housing or remote control buttons) after pressing for **5 seconds**, with hesitation indicator.

To engage Auto-Roll on the **TUBE MOTOR**, you need to press then release the button after the hesitation 'blip' at 5secs...but before 10secs of holding down either the directional control button on the unit or the remote control button.

To stop operation, press any button

To manually operate roller after Auto-Roll press any button

The Auto-Roll has a factory setting of 120 seconds.

To change Auto-Roll run time, start with:

- pool cover in the normal (start) position on the pool
- the control housing 'asleep' that is wait over 3 minutes from any button press

Note: AC charger **MUST** be disconnected

- ensure the disengage pin is engaged

You can program using either the remote control or the buttons on the unit...however using the remote within a 1 meter distance will give more consistent results (as it is more generous with the timing of pressing 'both buttons at once')

1. Start by continually pressing the tube motor button for the whole operation that you want to program (don't release the button then press it again), until the cover has come off to the desired position on the roller then release the directional button to stop operation
2. After releasing the direction button, count to 3

3. Then press and hold BOTH tube motor direction buttons at the same time until it buzzes once (approx. count to 5), then release both buttons
4. After programming, let the control housing go 'to sleep' (wait over 2 minutes for lights to turn off) then test operation. If you press a button before the control housing goes to sleep it will NOT remember the program just set
5. Test operation

If using the remote, make sure you are close to the control housing on your unit to make sure there is no electrical interference while programming

If the control housing goes back to sleep or the move distance is less than 20 seconds the program will not change, so wind out to desired length, double press, wind back in again, double press

To restore Auto-Roll Factory settings:

1. Start with control housing asleep (control housing goes to sleep after 2 minutes of no operation/button press)
2. Press and hold BOTH tube motor direction buttons at the same time until it buzzes twice (approx. count to 5), then release both buttons
3. Allow the control housing go 'to sleep' (wait over 2 minutes for lights to turn off) then test operation. If you press a button before the control housing goes to sleep it will NOT remember the program just set (factory reset)

Note: Control housing won't go to sleep with AC plugged in

Programming New Remote Control

Every new remote control needs to be programmed (paired) with the control housing

To program a remote control simply:

1. Press any direction button on the control housing unit to wake up the control housing
2. Press the **Program** button for 1 to 3 seconds
3. Press **any** button on the remote control for 1 second (unit may start operation as remote control is now programmed)

Note: only one button is required to be pressed to program all the buttons on the remote control unit



Daisy Power Program Button



Remote

LED Indicator Light logic

1. When motor is operating, the battery LED will show red as it's loading the battery and drawing the power.
2. Red Light is an indicator of what control housing is doing, it is NOT an error indicator
3. Battery charging lights may 'flicker' to indicate the charge rate. The faster the 'flicker' the faster the charge (may look like a different colour) the slower the 'flicker' the slower the charge



Solar light:

Red Light = Charging the battery, voltage <10.5V

Yellow light = Charging the battery, voltage (10.5V~11V)

Green light = Full charged, battery voltage >11V

AC charger light:

Red Light = Charging the battery, voltage <10.5V

Yellow light = Charging the battery, voltage (10.5V~11V)

Green light = Full charged, battery voltage >11V

Battery light:

Without Solar or AC Charging, after the motor operation (pressing a button not in auto roll):

Red light = battery voltage <10.5V – or while AC plugged in battery may stay red indicating available - not a fault.

Yellow light = battery voltage (10.5V~11V)

Green light = battery voltage >11V

Regularly check tension of all screws and mounting bolts

Test Procedure

If there are any issues with the operation or the unit is unresponsive, before a service call can be requested (to be completed by end user), plug in and turn on AC charger continually for a minimum of 3 days (note keep all 240v cords and charger protected from weather and further than 4m away from pool water)

AC charger is normally warm when working

If Daisy Power unit is non-responsive:

Is the unit responsive at all...any partial movement, humming, clicks or any response?

What is the light display?

Note:

- if AC charger is NOT plugged in, lights will stay illuminated for approximately 1 minute after any button press then turn off
- if AC charger IS plugged in lights will stay on all the time (see Indicator lights image below)

After fully recharging (for a minimum of 3 days) to report any fault, record what is happening when you test operation (press button) now?

- AC charger when plugged in will operate from the AC charger through PCB at full power

Is the unit responsive at all with both remote control AND buttons on the control housing in both or any direction...any partial movement, humming, clicks or any response?

Is there any change from before charging?

Is the Tube Motor wire plugged in correctly or is there any damage to the tube motor wire?

Note: For units behaving strangely: to re-boot system 'unplug the tube motor plug'.

- Leave tube motor wire unplugged as this isolates the battery, wait 2 minutes then re plug in tube motor to check operation. What is the result?

Check correct connection of AC and PV wires into the control housing. If AC and PV wires reversed no charging will happen.



Tube
Motor

AC
Charger

PV
Panel



Indicator lights

Service Call Inspection

Note: Charges may apply

Look at surroundings + report **all** readings and findings

- Where is the unit is located, how much sun during the day is the solar panel receiving? (photo of installed location and surroundings)
- Is there anything impeding the solar panel performance?
- What is the 'normal' operation of the unit (how does the customer use it, how many times a day, how long between AC charges)?

How long has AC charger been plugged in? (Record any response during testing)

Make sure AC charger is plugged in, turned on – test AC charger

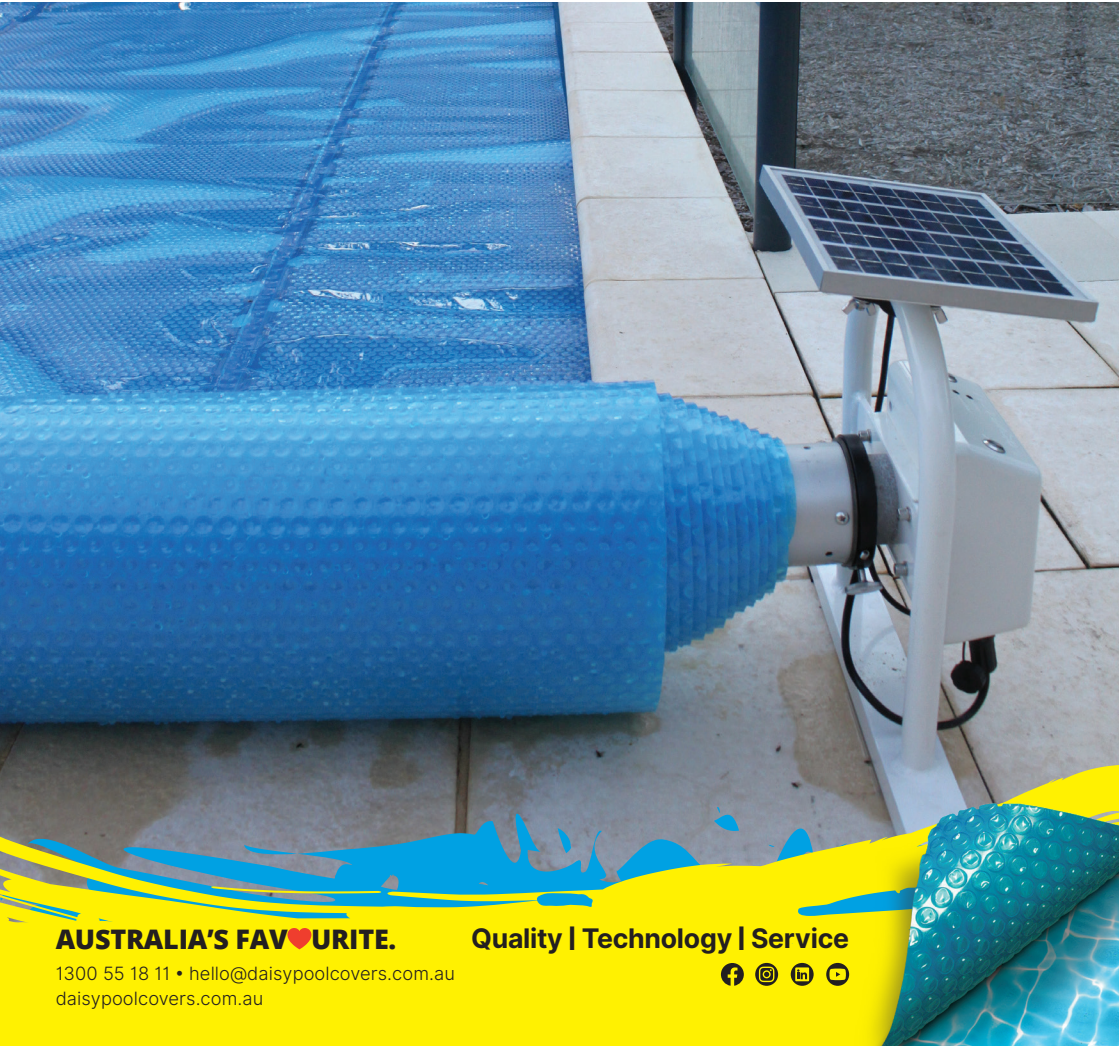
Warranty Period on electrical components (remote/control housing/tube motor/AC charger) is 2 years limited warranty. (This warranty does not cover battery failure).

See Daisy Power T&C:

<https://daisypoolcovers.com.au/wp-content/uploads/2022/05/Daisy-Power-Showcase-Warranty.pdf>

All Mechanical parts: 10 year pro rata warranty

Note: Pro Rata warranty does not cover scratches or chips to the powder coating finish.



AUSTRALIA'S FAVOURITE.

Quality | Technology | Service

1300 55 18 11 • hello@daisypoolcovers.com.au
daisypoolcovers.com.au

